



# DISHWASHER SRC-2200IS90EV 400/50/3N

85/126 baskets per hour (up to 2.200 plates/hour).

P/N 1302524



WARE WASHING  
RACK CONVEYOR DISHWASHERS



- ✓ Temperature control with high precision probes.
- ✓ Visualisation and adjustment of washing and rinsing temperatures in the digital display by pressing a button.
- ✓ Easy to install rinse aid dispenser intake in boiler.

## INCLUDES

- ✓ Drying unit TS-90.
- ✓ Extraction hood with motor EV.

## OPTIONAL

- Inlet tables and compositions.
- Outlet tables and compositions.

## ACCESSORIES

- Manual water softeners
- Automatic water softeners
- 500 x 500 mm. baskets
- Inserts & supplements
- Loading table for corner situation for rack conveyor dishwashers
- Central sorting tables
- Double connection central sorting table
- Single exit tables
- Roller conveyor and corner roller conveyor
- Machined curve
- Connecting tables for pass-through dishwashers and rack conveyors

## SALES DESCRIPTION

Washing + rinsing.  
2 speeds.

- ✓ Fully stainless steel jacket.
- ✓ Inlet and outlet splash guards are standard.
- ✓ Stainless steel central rack feed system.
- ✓ Process cycles are divided by rubber curtains.
- ✓ Automatic cycle start.

### Economy

- ✓ Energy saving rinse supply switch.
- ✓ Pressure controller in the rinse section to limit consumption.
- ✓ Programmed automatic stops if there is no loading.
- ✓ Stop and freezing of timer when the limit switch actuates.

### Cleaning and maintenance

- ✓ Wide pivoting door allowing access for cleaning or inspection purpose.
- ✓ Detachable arms and dispersers for easier cleaning.
- ✓ Sloped removable stainless steel filters with independent removable basket.
- ✓ Easy boiler emptying by loosening a hose.
- ✓ Failures are easily detected thanks to the warning lights.
- ✓ Easy to repair without moving the machine.

### Washing

- ✓ Stainless steel wash arms and deep-drawn dispersers.
- ✓ Efficient and durable wash arm dispersers.
- ✓ Powerful, self-draining vertical wash pump.
- ✓ Easy to install detergent dispenser intake in washing tank. Rinsing

### Rinsing

- ✓ Stainless steel rinse arms and powerful, stainless steel, deep-drawn dispersers.
- ✓ Automatic boiler filling with no failure risk for heating elements.

## SPECIFICATIONS

### Production

- ✓ Production baskets/hour: 85 / 126
- ✓ Production plates/hour: 1530 / 2200

### Wash

- ✓ Temperature: 55 °C - 65 °C
- ✓ Wash tank capacity: 100 l
- ✓ Pump: 3 Hp / 2250 W
- ✓ Wash heating element: 9000 W

### Rinse

- ✓ Temperature: 80 °C - 90 °C
- ✓ Water consumption: 300 l/h
- ✓ Rinse heating element: 18000 W
- ✓ Boiler capacity: 20 l

### Drag

- ✓ Drag motor power: 0.25 Hp / 180 W

### Drying

- ✓ Air flow: m<sup>3</sup>/h
- ✓ Fan power: Hp / W
- ✓ Dryer heater element: W

### Mist extractor

- ✓ Ev output diameter: mm
- ✓ Mist extractor power: Hp / W

### Loading

- ✓ Total installed power: 29580 W

Electrical supply: -- V / -- Hz / -- ~(-- A)

Electrical connection: 3P+N+G

### External dimensions (WxDxH)

- ✓ Width: 1700 mm
- ✓ Depth: 829 mm





# DISHWASHER SRC-2200IS90EV 400/50/3N

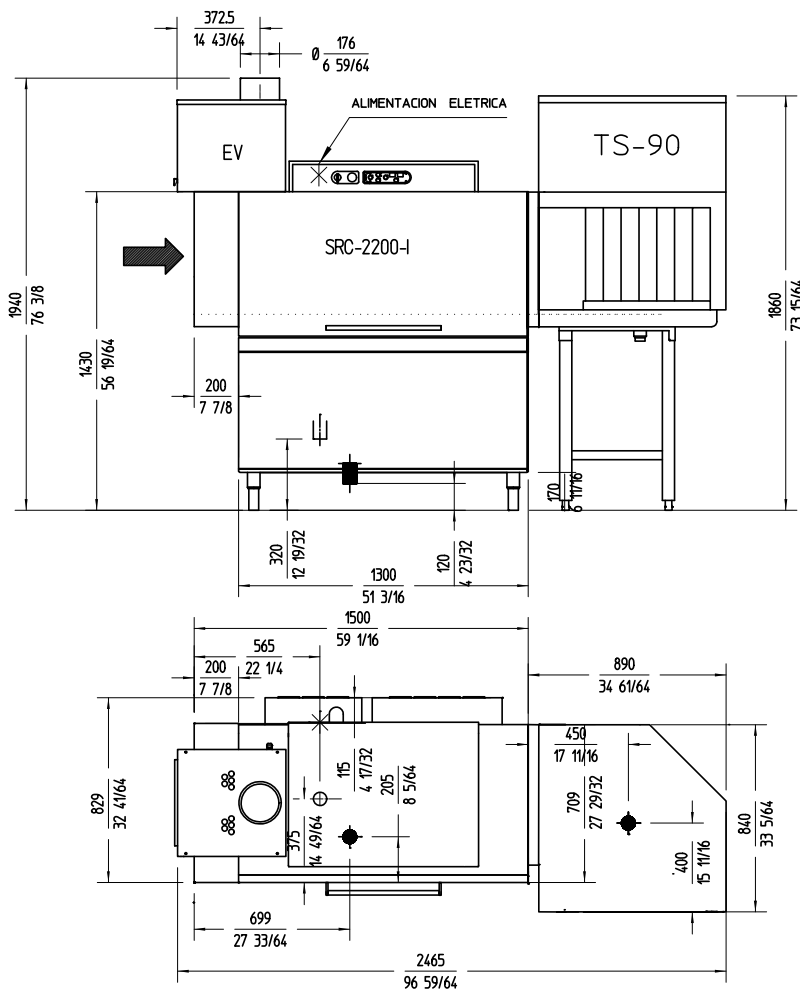
85/126 baskets per hour (up to 2.200 plates/hour).



P/N 1302524

- ✓ Height: 1520 mm
- Net weight:** 385 Kg
- Water Intake:** 3/4 "
- Drain diameter:** 1 1/2 "
- Noise level (1m.):** 71 dB(A)

**Crated dimensions**  
 2490 x 980 x 2100 mm  
 Gross weight: 420 Kg



WARE WASHING  
RACK CONVEYOR DISHWASHERS

**sammic** | www.sammic.com  
Food Service Equipment Manufacturer

Polígono Basarte, 1. phone +34 943 15 72 36  
20720 Azkoitia, Spain sales@sammic.com



Project	Date
Item	Qty
Approved	

product sheet  
updated 20/07/2023